



## Penthouse Apartment

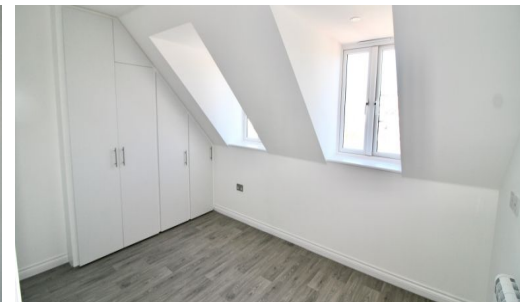
**£495,000**

Address : Flat 4 Halesea, 26, Havre des Pas, St. Helier, JE2 4UQA stunning new penthouse apartment, one of only four which have just been skilfully created within a superb period villa overlooking Havre des Pas bathing pool and St. Clement's Bay by an extremely well renowned local builder. The apartment includes: two double bedrooms with fitted wardrobes, large living room views overlooking the sea, fully fitted kitchen and shower room. In addition there is a private store room.

St Helier



Qualified | Flying Freehold | Web Ref:1920





## Entrance Hall

Built in storage. Door to

---

## Kitchen/Living Room

(8.10m x 3.94m) Fitted with a range of floor and wall mounted units. Integrated appliances including: fridge/freezer, microwave, washing machine, dishwasher, oven, hob and extractor.





---

## Bedroom One

(4.23m x 3.37m) Built in wardrobes. Electric radiator.



---

## Bedroom Two

(3.91m x 2.87m) Built in wardrobes. Electric radiator.



---

## Shower Room

(2.29m x 2.40m) Three piece suite comprising : WC, shower and vanity unit. Heated towel rail.



---

## Services

All mains except gas. Electric heating.

---