

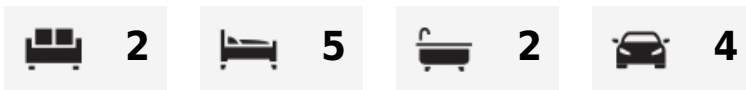


Detached five bedroom home

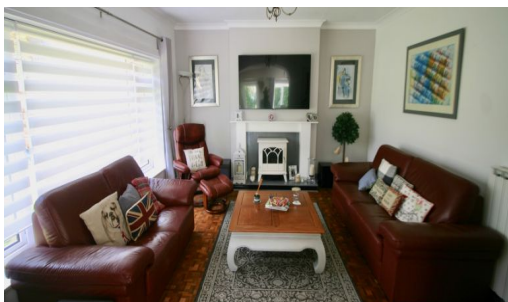
£750,000

St Saviour

Address : The Manor Lodge, La Rue des Pres, St. Saviour, JE2 7QLA detached five bedroom family home on a large plot just a few moments walk from the local shops, primary school and on a regular bus route to St. Helier. The property comprises: five bedrooms, large living room, dining room, fitted kitchen, bathroom, shower room and utility. Outside there is a large rear garden and parking for 3 cars plus car port. The property has plans passed for a further extension if required.



Qualified | Freehold | Web Ref:1827





Entrance Hall

Radiator, Parquet flooring, stairs to landing, cupboard beneath stairs doors to

Living Room

153 4.65m x 146 4.42m Parquet flooring, radiator, open to



Dining Room

157 4.76m x 144 4.39m Fireplace, parquet flooring, radiators, doors to garden and





Kitchen

1510 4.84m x 108 3.26m Fitted with a range of floor and wall mounted units. Rangemaster cooker. Integrated fridge/fridge and dishwasher. Radiator. Doors to



Utility

69 2.08m x 52 1.59m Oil fired central heating boiler. Fitted units with Belfast sink. Door to exterior.

Shower Room

1010 3.31m x 41 1.26m Large shower enclosure, WC and basin. Heated towel rail. Recessed lighting



First Floor Landing

Hatch to large floored attic (with plans passed for extension), built in storage. Doors to

Bedroom One

143 4.37m x 136 4.12m Built-in wardrobes, Radiator



Bedroom Two

162 4.94m x 1010 3.31m (longest x widest) Radiator



Bedroom Three

14 4.27m x 9 6 2.92m Built-in wardrobes, Radiator



Bedroom Four

111 3.39m x 116 3.51m Radiator



Bedroom Five

101 3.09m x 88 2.66m Built in wardrobe, radiator.



Bathroom

105 3.05m x 75 2.27. (Longest x Widest) White suite comprising: large bath, wc shower enclosure and basin. Ladder style radiator/towel rail. Recessed lighting. Airing cupboard.



Outside

Large sheltered garden, carport plus parking for three cars.





Services

All mains except gas. Bottle gas for hob. Oil fired central heating..



C R E S P E L P R O P E R T I E S

