



Charming Granite Cottage

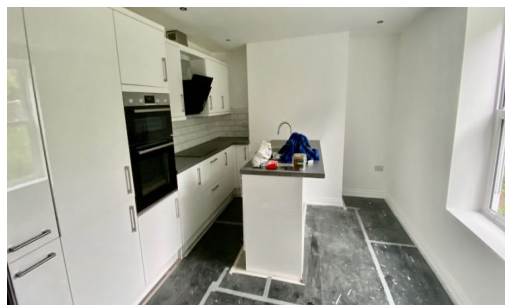
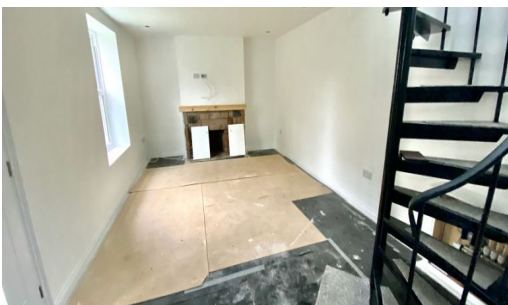
£575,000

St Helier

A semi-detached, two-storey cottage located at the end of a shared footpath leading from the St Aubins Inner Road and near to the amenities at First Tower. The accommodation includes: living room, kitchen, two bedrooms and bathroom. Outside there is a large garden and a lean-to open fronted store. FLOOR PLAN



Qualified | Freehold | Web Ref:2147





Porch

Door to

Living Room

(5.81m x 3.57m)



Kitchen

(3.92m x 3.78m) Fitted with a range of floor and wall mounted units. Integrated appliances including: double oven, fridge/freezer, washer/dryer, hob, extractor and dishwasher.





First Floor

Landing

Bedroom One

(3.96m x 3.60m) Built in storage.





Bedroom Two

(3.60m x 3.51m) Built in storage.



Bathroom

(2.88m x 1.59m) Three piece suite comprising: shower, WC and basin. Heated towel rail.





Outside



Services

All mains except gas.
