

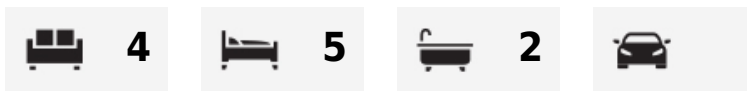


Untouched period gem

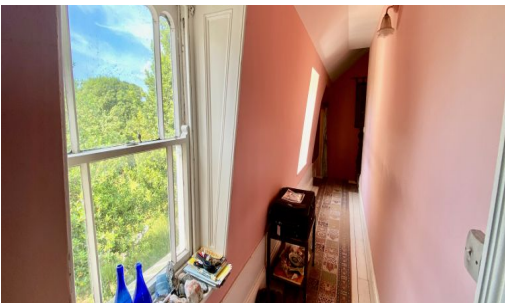
£900,000

Available for the first time in living memory this substantial home was constructed approximately 120 years go and retains huge charm and the style of the period. The property is now in need of renovation throughout and offers enormous scope for someone looking for a large family home. The accommodation includes: five bedrooms, four receptions, two bath/shower rooms, kitchen and cloakroom. Outside there is a large walled south facing garden. FLOOR PLAN

St Clement



Qualified | Freehold | Web Ref:2141





Entrance Hall

Stairs to landing. Doors to

Living Room

255 7.68m x 1311 4.25m into bay windows, door to orangery. Fireplace. Radiators.

Dining Room

175 5.31m x 1111 3.64m Fireplace

Orangery

25 7.64m x 69 2.06m Doors to garden

Inner Hall

Stairs to landing, doors to Orangery and

Snug/scullery

155 4.72. X 13 6 4.13m Door to exterior and

Kitchen

1211 3.95m x 87 2.62m Fitted with a range of cupboards. Doors to larder, cloakroom and garden.



Mezzanine

Bathroom

Bath, WC and basin.

First Floor

Landing

Doors to

Bedroom One

143 4.36m x 137 4.15 Fireplace

Bedroom two

178 5.41m x 13 6 4.12m Fireplace

Bedroom Three

1310 4.22m x 101 3.08m fireplace french doors to balcony



Bedroom Four

141 4.31m x 11 5 3.49m Fireplace.

Bedroom Five

147 4.47m x 9 8 2.95m Fireplace.

Bathroom

76 2.31m x 7 1 2.18m Shower and basin in white. French doors to balcony.

Outside





Services

Soakaway drainage and mains water.
