



One Bedroom Apartment in Castle Quay

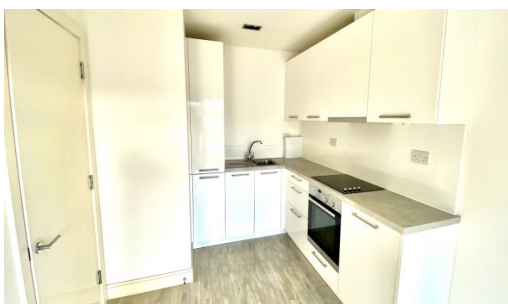
£315,000

St Helier

A bright one bedroom apartment located on the fifth floor of Le Capelain at Castle Quay. The accommodation includes: bedroom with fitted wardrobe, living/kitchen with a fully fitted range of units and integrated appliances, bathroom and Juliette balcony. A great apartment in a popular marina side location. FLOOR PLAN



Qualified | Share-transfer | Web Ref:2032





Entrance Hall

Airing cupboard. Doors to

Kitchen/Living Room

(5.70m x 2.99m) Fitted with a range of floor and wall mounted units. Integrated appliances including : fridge, oven, hob, extractor and dishwasher.



Bedroom

(3.28m x 2.92m) Built in wardrobes.



Bathroom

(2.18m x 1.85m) Three piece suite in white comprising : bath with shower attachment, WC and basin.



Services

All mains except gas. Electric heating. Service charge : £360.59
pp.
